

SENSA® Flex

Treatment chair for
infusion and transfusion



LIKAMED®

SENSA® Flex

The chair with minimal space requirement and maximum comfort for your patients

SENSA® Flex A3

3 motors for adjustment of back-, foot- and seat part

SENSA® Flex A4 CA

4 motors for adjustment of back-, foot- and seat part and height adjustment plus central locking casters Ø 10 cm



Hand switch A4 with buttons for basic settings (sitting, shock/ Trendelenburg position), magnetical locking function



tuv-sud.com/ps-cert

Illustration shows colour and equipment variant.

SENSA® Flex – minimal space requirement with maximum comfort for patients.

SENSA Flex has been developed for the specific needs in oncological day-care hospitals and the infusion and transfusion medicine and is additionally excellent qualified for the use in general medical practices. She only requires very little space – but at the same time offers high stability and safety against overturning and is also certified by TÜV. The therapy chair SENSA Flex convinces with stepless, motorized position adjustment. Easy entrance and exit from the chair's front is patient-friendly possible due to the low seat height and simplified through the advantageously foot part and the present seat inclination. Versatility and economic efficiency, the high patient comfort, with which even treatments lasting several hours can be undertaken in a relaxed manner, are characteristic for the SENSA Flex.

Features



Armrests incl. hand switch holder, rotatable, folding upwards and tiltable



Upholstery (2-layer foam)



Individually locking casters Ø 7.5 cm (SENSA Flex A3)



Central locking casters Ø 10 cm (SENSA Flex A4 CA)



Entry and exit from the front



Entry and exit from the the side



Smooth surface: easy to clean and disinfect

- 3 motors for adjustment of back, foot and seat part (SENSA Flex A3)
- 4 motors for adjustment of back, foot and seat part and height adjustment (SENSA Flex A4 CA)
- Low wedge-shaped foam armrests right and left
- Armrests rotatable and folding upwards

- Armrests tiltable
- Individually locking casters Ø 7.5 cm (SENSA Flex A3)
- Upholstery (2-layer foam)
- Neck roll in upholstery colour
- Power rating 100–240 V AC, 50/60Hz
- EU power plug



Stepless motorized adjustment from seat-, comfort- and bed position to shock- or Trendelenburg position

Options



Paper roll holder



Push handle fixed



CPR release



Bag holder



Infusion rod holder right and left rotatable



Infusion rod incl. bottle holder



Relax pillow in upholstery colour



Tablet holder



Swiveling table



Foam armrests of imitation leather incl. hand switch holder, right and left



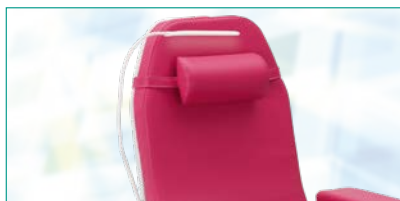
Wedge-shaped foam armrests incl. hand switch holder, right and left



Armrest with additional tilt adjustment



USB charging port



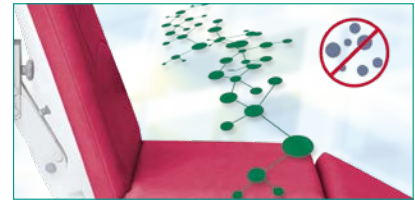
USB reading lamp for the USB charging port



Upholstery wedge between seat- and backpart



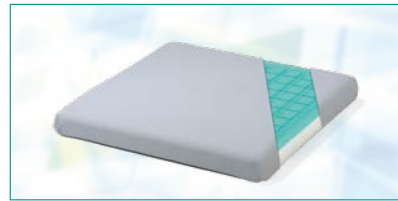
Jersey stretch cover (washable) for upholstery, neck roll, relax pillow and all armrests



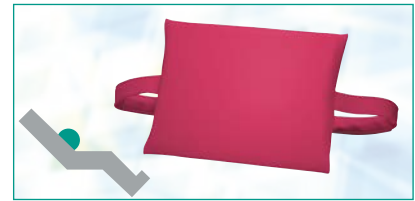
Antimicrobial upholstery



Transparent, cleanable protective cover for foot part and all armrests



Pressure relieving gel seat cushion with PU-cover in grey



Lumbar support (in upholstery colour)



Upholstery 2-layer foam with special soft back- and seat part



Upholstery robust. The PU foam is particularly suitable for heavier patients.



Grey holder with velcro. Made of grey imitation leather and suitable for foam armrest pads



Individually locking casters Ø 10 cm (SENSA Flex A3)



Individually locking casters with direction locking Ø 10 cm (SENSA Flex A3)



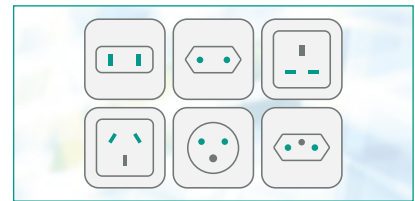
Central locking casters Ø 10 cm (SENSA Flex A3)



Equipotential bonding cable (absolutely necessary when using intracardiac procedures)



Rechargeable battery



Other power plug on request

Upholstery colours

Standard colours



stone



saffron



kiwi



agave



azure



sapphire

Additional colours



cream



lemon



lime



purple



raspberry



red



chestnut



chrome



anthracite



black

💧 Also available as antimicrobial upholstery.

On neck roll and relax pillow the strap colour matches the colour of the upholstery.



DT 1 and ST 1

Side tables



Side table DT 1, tiltable tray
incl. storage box



Side table ST 1, fixed tray
incl. storage box

Options



Flat, large tray, not removable,
fixed to the frame (for ST 1)



Holder for monitor etc.,
Ø 16 mm



Bottle holder/container



Lid for storage box, dark grey

Features

- Single-handed, spring supported height adjustment
- Removable tabletop with finger-hollow
- Tilttable tray (only model DT 1)
- Detachable plastic storage box
- Holder, e.g. for bags
- Strong metal frame construction
- Plastic-coated subframe with excellent durability, protection against corrosion and abrasion

Model	DT 1 and ST 1
Height	84 cm to 98 cm (adjustable)
Area required	42 cm x 66 cm
Casters	Ø 5 cm
Storage box	1
Capacity	6 l
Dimensions	approx. 17 cm x 27 cm x 15 cm
Colour	light grey RAL 7047
Tray	2
Size	40 cm x 53 cm (removable)
Small, trapezoidal	40/30 cm x 18 cm (fixed)
Colour	light grey RAL 7047
Colour of frame	light grey RAL 7047
Maximum load	25 kg
Weight	17 kg

HKL 1 and HVS 1

Universal stool



Universal stool HKL 1, foam
seat part covered with
imitation leather



Universal stool HVS 1, grey
full foam (foamed) seat part

Features

- Base with easy ring control
- Continuous height adjustment via gas spring
- Mobile "soft brake" with wheels for hard floors (for example laminate, parquet)
- Standard colour of seat part universal stool (for HKL 1) see colour chart

Options

- Special colour for seat part (only HKL 1)

Model	HVS 1	HKL 1
Height	53 cm to 71 cm (adjustable)	
Area required	56 cm x 56 cm	
Casters	Ø 5 cm	
Seatpart	Ø 38 cm (shore 15° A)	
Colour of seat part	grey	see colour chart
Weight	7 kg	

Technical Specifications



Technical data	SENSE Flex A3	SENSE Flex A4 CA
Armrests length x width	51.5 cm x 15.5 cm	
Upholstery length x width x height	198.7 cm x 53.5 cm x 7.0 cm	
Total length (max.) x width	198.7 cm x 84.4 cm	
Seating height	57 cm to 78 cm	
Angle of inclination		
Back part	0° to 81° (Shoulder area) -20° to 61° (Loin area)	
Seat part	7° to 20°	
Foot part	-77° to 20°	
in Shock, Trendelenburg position	20°	
Upholstery material	UV-proof, impermeable to moisture, checked for biocompatibility and toxicity, flame retardant	
Colour covers and metal frame	light grey RAL 7047	
Colour upholstery	refer to the colour chart	
Colour armrest	refer to the colour chart	
Casters		
Individually locking Ø 7.5 cm	■	-
Individually locking Ø 10 cm	□	-
Central locking Ø 10 cm	□	■
Motorised adjustment of		
Back part	■	■
Seat part	■	■
Foot part	■	■
Height adjustment	-	■

Technical data	SENSE® Flex A3	SENSE® Flex A4 CA
Battery	□	
Equipotential bonding	□	
Power rating, primary	100-240 V AC, 50/60 Hz	
Power rating, secondary	29 V	
Fuses	Internal	
Protection type hand control unit	IP 66	
Protection type controller	IP X4	
Protection class	II	
Duty cycle	2 min ON/18 min OFF	
Consumption in standby	approx. 1 W	
El. equipment	DIN EN 60601-1	
EMC	DIN EN 60601-1-2	
Spiral power cable	2.0 m to 3.5 m	
Permitted air pressure	800 to 1060 hPa	
Ambient temperature	10° to 40° C	
Emission sound pressure level	< 65 dB(A)	
Medical device class	I	
Applied parts type	B	
Safe working load	200 kg	
Weight (without options)	60 kg	75 kg
Guarantee	2 years	

■ = Standard □ = Option



Made in
Germany



LikAMED is certified

- QM certification according to EN ISO 13485
tuv-sud.com/ps-cert
- Certified environmental management system according to EN ISO 14001
tuv-sud.com/ms-cert

LikAMED®

LikAMED GmbH · Raußmühlstraße 7 · 75031 Eppingen · Germany
Phone: +49 7262 9189-0 · E-mail: info@likamed.de
www.likamed.de